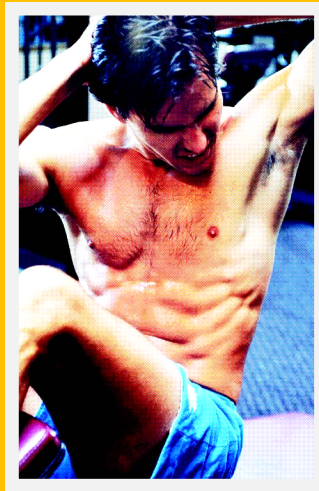
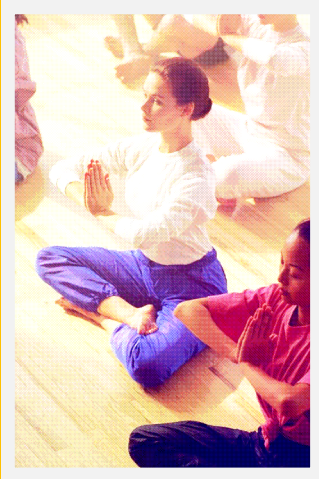


HOURS:

Monday - Friday • 5:30 a.m. - 9:00 p.m.
Saturday • 8:00 a.m. - 4:00 p.m.
Sunday • Closed



VOLUNTEER OPPORTUNITIES

A variety of volunteer opportunities are available at the YMCA. No matter what your special talents, interests, and schedule is, you can help change someone's life at the YMCA.



CORPORATE PARTNERS

Reid Hospital & Health Care Services
Richmond Community Schools
United Way of Whitewater Valley

CORPORATE SPONSORS

Wayne County Foundation
JC Penney After School Fund
Wallace Foundation
Old National Bank Foundation
Gannett Foundation
US Bank Foundation
Wal-Mart
Meijer

RICHMOND FAMILY YMCA

2023 Chester Boulevard
Richmond, IN 47374
(765) 962-7504

www.richmondfamilyymca.org



www.facebook.com/RichmondFamilyYMCA



@RichmondYMCA



Richmond Family YMCA

MEMBERSHIP

**FOR YOUTH DEVELOPMENT
FOR HEALTHY LIVING
FOR SOCIAL RESPONSIBILITY**

FAMILY MEMBERSHIP CATEGORIES ARE DEFINED BY IRS STANDARDS ACCORDINGLY:

Family Membership includes:
Husband & wife plus tax dependents

**The joining fee is a one-time fee as long as the membership is kept current. Membership lapsing longer than 30 days will be required to repay joining fee.*

Methods of Payment

Electronic Fund Transfer (monthly bank draft)
An easy way to pay as you go! Your checking, savings or credit card account is debited once per month.

Annual Payment - Is paid in full upon joining and yearly thereafter. Payment is accepted via Cash, check, or credit card.

3 Month Membership

3 month membership fees must be paid in full For all 3 months. Corporate discounts do not apply.

Financial Assistance

The YMCA welcomes all who wish to participate. Financial Assistance will be provided to those who qualify based on a sliding fee scale determined by family size and income.

Refund Policy

YMCA memberships are nonrefundable and nontransferable to another person or YMCA.

A.W.A.Y.

The A.W.A.Y. (Always Welcome At YMCAs) sticker on your membership card entitles you to visit participating YMCAs in other cities when you are traveling.

MEMBERSHIP RATES

Bank Draft/Annual Membership

Category	Member Rates Monthly	Joining Fee
Student (5-18)	\$12	\$20
Adult (18+)	\$28	\$45
Older Adult (65+)	\$22	\$30
Family	\$40	\$70

3 Month Membership

Category	Member Rates (3 Month Rate)	Joining Fee
Student (5-18)	\$51	\$10
Adult (18+)	\$99	\$20
Older Adult (65+)	\$81	\$15
Family	\$135	\$30

*Ask us About our
Corporate Rates!*

INCLUDED WITH YOUR MEMBERSHIP:

Certified Personal Trainers
Fitness Coaches
Zumba Fitness Classes
Self Defense Classes
Adult Martial Arts Classes
Adult Basketball



DISCOUNTED WITH YOUR MEMBERSHIP:

Youth Sports (co-ed):
*Basketball • Football
Volleyball • Indoor Soccer
Outdoor Soccer • Tee Ball
Track & Field • Cheerleading
Y-Care
(After School Child Care)
Youth Martial Arts
Preschool Sports
Summer Day Camp*

Check our web site:
www.richmondfamilyymca.org